



GEZE HOSPITAL SLIDING DOOR SYSTEMS TARGETED SAFETY SOLUTIONS



TABLE OF CONTENTS

Introduction: GEZE - A tradition of innovation	4
GEZE hospital sliding door systems	6
Airtight sliding doors	8
Hermetical sliding doors	9
Technical description	10
Finishing materials	11
Control and safety devices	11
Accessories	12
References	13

GEZE - A Tradition of Innovation

Quality "Made in Germany"

GEZE GmbH is numbered amongst the world's most successful suppliers of systems for door, window and security engineering. As one of the market leaders in innovation and design, the company, which was established in Stuttgart in 1863, develops, produces and distributes top quality technology that has had a major influence on building management systems. The products undergo further development in the company's own technology centre.

GEZE stands for quality "Made in Germany". Around the world. Which is why GEZE products are manufactured and installed in accordance with German quality standards. But the quality mark stands for much more. At GEZE, it is confirmed through innovations and a focus on the future, which are systematically supported and promoted. And this isn't just reflected in the technology but also in terms of intelligent functionality, sustainability and unique design.

GEZE products and system solutions constantly undergo internal and external monitoring and have been awarded various internationally recognised approvals, test certificates and quality marks by both national and international institutes. These guarantee the high GEZE quality, not just in Germany but around the world.

In step, locally and globally

GEZE's headquarters have been in Leonberg, close to Stuttgart, since 1959, where over 900 highly qualified employees use knowledge and skills in the company's own technology centre and state-of-the-art manufacturing plant. They work together using corporate know-how to create innovative and ground-breaking products. Leonberg and Germany will continue to provide the central development and manufacturing facilities going forward. GEZE also has production locations in China and Serbia, in order to be able to deliver to their customers around the world, in as timely a manner as possible. With 31 subsidiary companies and an extensive network of agents, GEZE is represented worldwide.

GEZE locations

Asia-Pacific, Austria, Benelux, Brazil, China, Czech Republic, Croatia, France, Germany, Hungary, Iberia, India, Italy, Middle East, Poland, Romania, Russia, Scandinavia, Serbia, Slovenia, South Africa, Switzerland, Turkey, Ukraine and United Kingdom



GEZE HOSPITAL SLIDING DOORS



Accessibility, Safety, Comfort, Design

Whether in residential care homes, facilities for the disabled, hospitals or public buildings, the topic of accessibility in public buildings is here to stay. At the same time, reliable safety systems for personal protection and fire detection are essential in buildings where many people congregate together. GEZE creates accessible and comfortable solutions in combination with tailored standard solutions. And these are system-solutions, as the different GEZE components can be combined with each other as required.

As well as safety and comfort, the look of the utilised technology plays a decisive role for architects and planners. With its new developments, GEZE is continually making moves towards creating an unobtrusive, low-key design - always with the goal of integrating intelligent technology attractively and discreetly into buildings.



Sustainability

Working for the long-term has always been the GEZE way. As a family business, our focus is on achieving stable, long-lasting returns rather than short-term profit-maximisation. In order to secure our innovation power, we set great store on continuously developing the potential of our staff. They are the basis for the long-term success of the company, which helps to maintain jobs and to create new ones around the world. Global corporate activity also means global corporate responsibility. The company places the highest priority on continuously improving the ecology of our products and manufacturing facilities as well as on the responsible use of natural resources. GEZE works according to the latest environmental standards, our QM system has ISO 9001 certification.

GEZE products meet the DGNB (German Sustainable Building Council) and LEED (Leadership in Energy and Environmental Design) criteria for sustainable buildings. These certificates are amongst the most important indicators of the sustainability of a building.



GEZE services

Reliable, competent and highly efficient customer service is one of our most important objectives when it comes to customer satisfaction. And this is why GEZE has a range of offerings for the service and maintenance of its own and third-party products. The regular servicing and qualified maintenance of automatic systems are essential to ensuring long-term personal and operational safety.

With GEZE Building Management, architects, specialist planners, general construction contractors and property developers benefit from targeted consultancy and a wide spectrum of related services. Our support starts with the draft planning and extends through to the completion of the building and beyond. We deliver detailed product information and coordinate the interfaces between the individual disciplines. This doesn't just save our customers money. It saves them time as well. In addition, we also offer an extensive programme of seminars, which give our customers the opportunity to find out about GEZE products, according to their needs.



Standards

GEZE products such as hold-open systems, automatic door systems or natural ventilation systems (RWA), raise the comfort levels within a building. At the same time, they are also elements of a security concept. For this reason, planning and building legislation stipulates high normative requirements for the maintenance and installation staff when working on security-relevant door and window technology, both during installation and during the testing and maintenance of the equipment.

In order to ensure these high levels of qualification and the resulting optimum service, we train over 3000 service engineers every year in more than ten different specialist areas. They receive a GEZE certificate, which is valid for four years. As well as subjects such as general official building approvals for hold-open systems or regional and special building codes, the GEZE training plan also includes standards such as DIN 18650 for automatic door systems, the directive for electrical locking systems on escape route doors (ELTVTR) and safety at work.

GEZE HOSPITAL SLIDING DOORS

GEZE hospital sliding door systems

Safety and control

GEZE automatic and manual hospital sliding doors are space-saving, contemporary and recommended for use in workplaces where bacterial contamination is a potential issue. Glass sliding doors are ideal when it comes to making good use of daylight and where visual criteria have to be fulfilled. Automatic and manual sliding doors from GEZE can be used to implement the widest range of application requirements within a building.

GEZE hospital sliding doors can be easily incorporated in prefabricated systems and in conventional walls. They can be operated automatically or manually, with the sliding movement controlled manually by means of resin or stainless steel handles.

GEZE hospital sliding doors can be supplied in airtight and hermetically sealed versions.

Application range

- Operating rooms in hospitals and clinics
- Research rooms and laboratories
- Laboratories of the pharmaceutical or food industries

Benefits

- Controlled exchange of air
- No entering of foreign particles
- Saves energy

GEZE HOSPITAL SLIDING DOORS



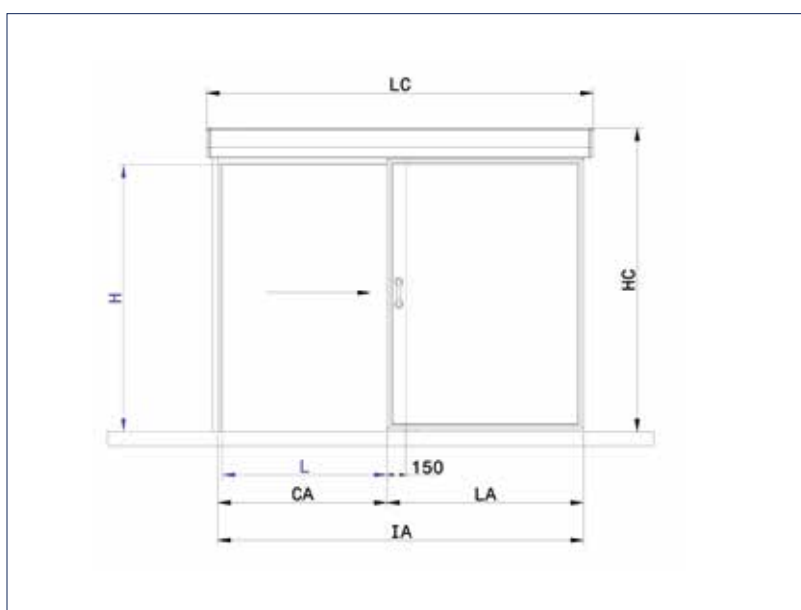
GEZE HOSPITAL SLIDING DOORS

Airtight sliding doors

GEZE airtight sliding doors are developed especially for use in clean-room areas and have a horizontal sliding movement. The seal is obtained on the two vertical sides with leaf gaskets which have an engagement on the vertical profiles applied on the door frame.

Sliding doors are used particularly in hospitals, clinics, in semi-conductor manufacturing facilities and production rooms in the food, chemical and pharmaceutical industries.

Airtight sliding door



Dimensional parameters

L = Width - net useful opening
 H = Height - net useful opening
 CA = Opening stroke = $L + 50$
 LA = Leaf width = $L + 100$
 IA = Leaf footprint = $(L \times 2) + 150$
 LC = Carter width = $(L \times 2) + 300$
 HC = Carter height = $H + 290$

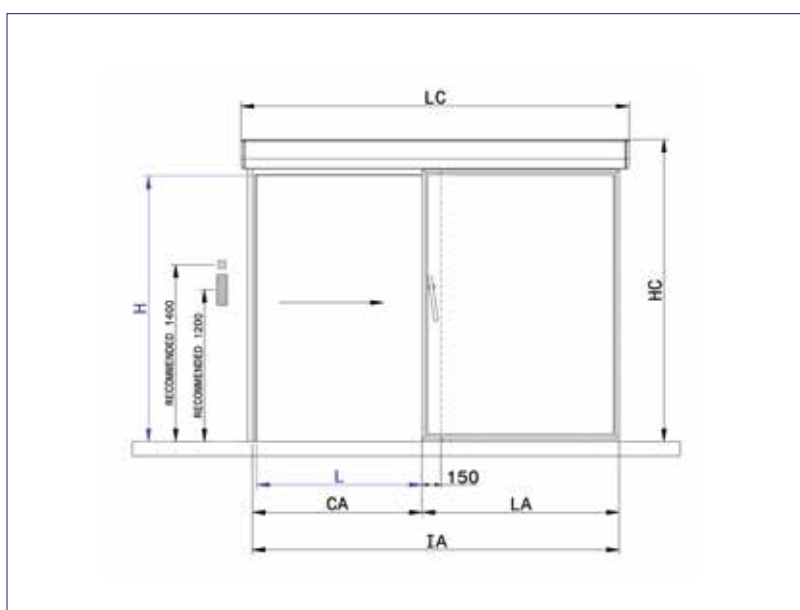
Masonry wall applications

L . Wall cutsize = $L + 100$ mm
 H . Wall cutsize = $H + 50$ mm

Hermetical sliding doors

In clinically sterile rooms, the hermetical sliding doors provide a hygienic environment. They were designed for automating entrances to laboratories or operating rooms in hospitals. These sliding doors have a hermetic seal in the final part of their closure on the perimetrical profile. This happens due to the combined movement of sliding, vertical traverse and traverse in depth, making an approach to the frame and to the floor with a stroke up to 20 mm and an inclination of 45°. The vertical traverse and the one in depth are obtained thanks to the special manufacture of the support guide and the sliding of the casters without additional actuators. The hermetic seal, both on the perimetrical profile of the door opening and on the floor, is obtained from the compression of special gaskets installed on the perimeter of the door leaf. In the bottom part of the door leaf the shaped profile slides on two guide points ("3rd and 4th point") that help to improve the hermetic seal.

Hermetical sliding door



Dimensional parameters

L = Width - net useful opening
 H = Height - net useful opening
 CA = Opening stroke = $L + 50$
 LA = Leaf width = $L + 250$
 IA = Leaf footprint = $(L \times 2) + 300$
 LC = Carter width = $(L \times 2) + 450$
 HC = Carter height = $H + 290$

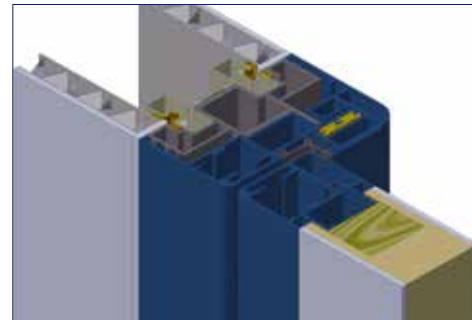
Masonry wall applications

L . Wall cutsize = $L + 260$ mm
 H . Wall cutsize = $H + 50$ mm

GEZE HOSPITAL SLIDING DOORS

Technical Description

Telescopic lining made in two parts: the frame profile and the subframe profile, made of extruded aluminium and/or stainless steel elements shaped with wide radius curves. The frame profile is equipped internally with specific grooves designed to accommodate the friction gasket that joins it to the subframe profile. In addition, the frame profile features a groove utilised for fixing purposes. The first groove is closed by means of a cover gasket that is completely coplanar with the frame profile. Thanks to special extensions in extruded aluminium, the frame can embrace different wall thicknesses.



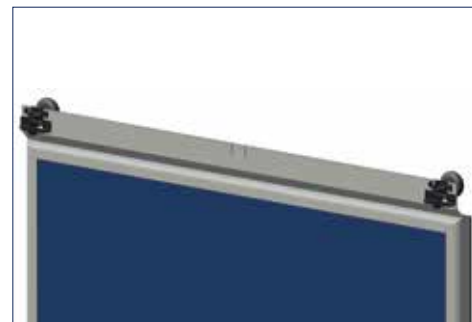
Lining

Housing profile to protect and cover the sliding mechanism made of extruded aluminium shaped with a wide radius curve without sharp edges or protrusions, to ensure ease of cleaning. The housing profile features a groove designed to receive the masking gasket that allows the complete closure of the lower side in correspondence with the top profile of the door leaf. The ends of the housing profile are fitted with end caps having an identical radius of curvature to the profile and performing a closing function. The housing profile allows easy maintenance that can be performed by a single operator.



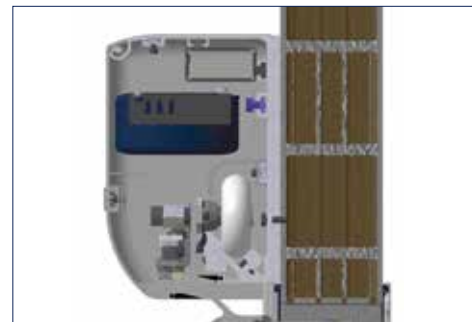
Housing

The door leaf is made of extruded aluminium profiles shaped with wide radius curves. The top profile of the door leaf is made with a special cross section that allows the direct application of the hanger kit without having to fit an adapter profile. A special extruded non-toxic silicone sealing gasket is mounted in a specific groove on the vertical profiles and top profile of the door leaf. A special dual component lower sealing gasket with lip facing the frame profile side is fitted in a specific groove on the bottom profile of the door leaf.



Leaf

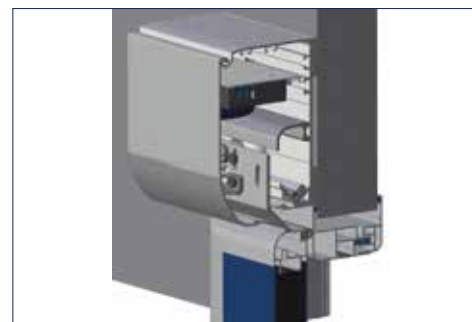
Horizontal and vertical sliding movements are achieved by means of a beam profile made of heavy gauge extruded aluminium with anodised finish, prearranged for secure fixing both on masonry walls and on prefabricated self-loading systems. The beam profile is designed to carry two hangers per leaf, each of which having a single nylon wheel running on ball bearings. The two hanger wheels are designed to guarantee silent operation and distribute the weight of the door leaf over the full length of the beam. The hangers enable adjustment of the door leaf in both a horizontal direction towards the frame profile and in a vertical direction to make it possible to adapt to floor level differences. The interior of the beam profile is also prearranged to receive an anti-derailing profile made of extruded aluminium. The travel limit stops are made with a specific extruded aluminium profile and equipped with rubber buffers. The floor track is made of Teflon coated steel.



Sliding mechanism

Automation for sliding doors, complete with:

- Operating system transmission with antistatic drive belt reinforced with Kevlar beads;
- 230 V AC – 50 Hz power supply with short-circuit protection;
- High-performance low-wear DC motor;
- Status signalling and fault indicator LEDs;
- Pause time for fully open door and for door with adjustable reduced opening dimension;
- Independent adjustable opening and closing speeds;
- Anti-crushing function with closing movement reversal and locking in open position;
- Battery powered emergency opening or closing.



Automation

Finishing Materials

GEZE sliding door leaf panels are made with a variety of finishing materials:

- SMS® (SOLID MINERAL SURFACE) panel;
- ANTIBACTERIAL ENAMEL STEEL ASEPSI CERAMICSTEEL® panel;
- STAINLESS STEEL panel;
- PAINTED STAINLESS STEEL panel;
- HPL LAMINATE panel;
- STRATIFIED HPL LAMINATE panel;
- GLASS panel composed of security natural float glass 3 + 3 mm.

Control and safety devices

The doors are equipped as standard with two large size elbow-operated pushbuttons, a pair of miniature safety photocells positioned to monitor the presence of obstacles on the threshold, backup battery unit for emergency opening during power outages and a key-type program selector.

GEZE hospital sliding doors comply with the following European Council directives:

- Machinery Directive: 2006/42/EC and subsequent amendments and additions;
- Community Directive of Electromagnetic Compatibility: 92/31/CEE d.lgs 4/12/92 n°476 and subsequent amendments and additions;
- Low Voltage Directive: 2006/95/EC and subsequent amendments and additions.



GEZE HOSPITAL SLIDING DOORS

Accessories



Elbow-operated pushbutton



Panic handle



GEZE Display Programme Switch DPS



GEZE LED Sensor switch



GEZE Finger Print GCFP 401



GEZE RFID-Reader GCVR 200



GEZE Combined detector GC 363 R



Control and safety sensor



Flush viewing window with blind



Crash rail

References



POTENTIAL APPLICATIONS OF GEZE PRODUCTS

You will find more product information in the relevant brochures, see ID numbers.

Door technology

01	Overhead door closers ID 091593, ID 091594
02	Hold-open systems ID 091593, ID 091594
03	Integrated door closers ID 091609
04	Floor springs ID 091607
05	Sliding door gear systems and linear guides ID 123605, ID 008770, ID 000586

Automatic door systems

06	Swing doors ID 144785
07	Sliding, telescopic and folding doors ID 143639
08	Circular and semi-circular sliding doors ID 135772
09	Revolving doors ID 132050
10	Actuation devices and sensors ID 142655

Smoke and heat extraction and window technology

11	Fanlight opening systems ID 127787
12	Electric opening and locking systems ID 154851
13	Electrical spindle and linear drives ID 154851
14	Electric chain drives ID 154851
15	Smoke and heat extraction systems ID 154851

Safety technology

16	Emergency exit systems ID 132408
17	Access control systems ID 132158
18	Panic locks ID 132848
19	Electric strikes ID 148666
20	Building management system ID 132408

Glass systems

21	Manual sliding wall systems (MSW) ID 104377
22	Integrated all-glass systems (IGG) ID 104366
23	GEZE Patch fittings mono glass systems ID 122521



POTENTIAL APPLICATIONS OF GEZE PRODUCTS



Door technology

The functionality, superior performance and reliability of GEZE door closers are impressive. A common design across the range, the ability to use them on all common door leaf widths and weights, and the fact that they can be individually adjusted makes their selection simple. They are continually being improved and enhanced with up-to-date features. For example, the requirements of fire protection and accessibility are fulfilled with a door closer system.

Automatic door systems

GEZE automatic door systems open up a huge variety of options in door design. The latest, innovative high-performance drive technology, safety, ease of accessibility and first class universal drive design set them apart. GEZE offers complete solutions for individual requirements. A dedicated division is responsible for the development and construction of individual special designs.

Smoke and heat extraction and window technology

GEZE smoke and heat extraction systems and ventilation technology provide complete systems solutions combining the many requirements of different types of windows. We supply a full range from energy efficient drive systems to natural ventilation and complete solutions for supplying and extracting air, also as certified SHEVs.

Safety technology

GEZE safety technology sets the standards where preventative fire protection, access control and anti-theft security in emergency exits are concerned. For each of these objectives GEZE offers tailored solutions, which combine the individual safety requirements in one intelligent system and close doors and windows in case of danger in a coordinated manner.

Building systems

In GEZE's Building Management System GEZE door, window and safety products can be integrated in to the security and control systems of the building. A central control and visualisation system monitors various automation components in the building and offers security through many different networking capabilities.

Glass systems

GEZE glass systems stand for open and transparent interior design. They can either blend discreetly into the architecture of the building or stand out as an accentuated feature. GEZE offers a wide variety of technologies for functional, reliable and aesthetic sliding wall or sliding door systems providing security with lots of design scope.

GEZE GmbH
P.O. Box 1363
71226 Leonberg
Germany

GEZE GmbH
Reinhold-Vöster-Straße 21-29
71229 Leonberg
Germany
Telefon +49 7152 203 0
Telefax +49 7152 203 310
www.geze.com

Germany
 GEZE Sonderkonstruktionen GmbH
 Planken 1
 97944 Boxberg-Schweigern
 Tel. +49 7930 9294 0
 Fax +49 7930 9294 10
 sk.de@geze.com

GEZE GmbH
 Niederlassung Süd-West
 Breitwiesenstraße 8
 71229 Leonberg
 Tel. +49 7152 203 594
 Fax +49 7152 203 438
 leonberg.de@geze.com

GEZE GmbH
 Niederlassung Süd-Ost
 Parking 17
 85748 Garching bei München
 Tel. +49 7152 203 6440
 Fax +49 7152 203 77050
 muenchen.de@geze.com

GEZE GmbH
 Niederlassung Ost
 Bühringstraße 8
 13086 Berlin (Weißensee)
 Tel. +49 7152 203 6840
 Fax +49 7152 203 76849
 berlin.de@geze.com

GEZE GmbH
 Niederlassung Mitte/Luxemburg
 Adenauerallee 2
 61440 Oberursel (b. Frankfurt)
 Tel. +49 7152 203 6888
 Fax +49 7152 203 6891
 frankfurt.de@geze.com

GEZE GmbH
 Niederlassung West
 Heltorfer Straße 12
 40472 Düsseldorf
 Tel. +49 7152 203 6770
 Fax +49 7152 203 76770
 duesseldorf.de@geze.com

GEZE GmbH
 Niederlassung Nord
 Haus 11, 1. OG - Theodorstr. 42-90
 22761 Hamburg-Bahrenfeld
 Tel. +49 7152 203 6600
 Fax +49 7152 203 76608
 hamburg.de@geze.com

GEZE Service GmbH
 Niederlassung Süd-West
 Reinhold-Vöster-Straße 25
 71229 Leonberg
 Tel. +49 1802 923392
 Fax +49 7152 9233 359
 service-leonberg.de@geze.com

GEZE Service GmbH
 Niederlassung Süd
 Parking 17
 85748 Garching bei München
 Tel. +49 1802 923392
 Fax +49 7152 9233 859
 service-muenchen.de@geze.com

GEZE Service GmbH
 Niederlassung Mitte
 Oberurseler Str. 69
 61440 Oberursel
 Tel. +49 1802 923392
 Fax +49 7152 9233 659
 service-oberursel.de@geze.com

GEZE Service GmbH
 Niederlassung West
 Heltorfer Straße 12
 40472 Düsseldorf
 Tel. +49 1802 923392
 Fax +49 7152 9233 559
 service-duesseldorf.de@geze.com

GEZE Service GmbH
 Niederlassung Nord-Ost
 Bühringstraße 8
 13086 Berlin (Weißensee)
 Tel. +49 1802 923392
 Fax +49 7152 9233 759
 service-berlin.de@geze.com

GEZE Service GmbH
 Niederlassung Nord
 Theodorstr. 42-90, Haus 11
 22761 Hamburg
 Tel. +49 1802 923392
 Fax +49 7152 9233 459
 service-hamburg.de@geze.com

Austria
 GEZE Austria
 Wiener Bundesstrasse 85
 A-5300 Hallwang
 Tel: +43 6225 87180
 Fax: +43 6225 87180 299
 austria.at@geze.com

Baltic States
 GEZE GmbH Baltic States office
 Dzelzavas iela 120 S
 1021 Riga
 Tel. +371 678960 35
 Fax +371 678960 36
 office-latvia@geze.com

Benelux
 GEZE Benelux B.V.
 Industrieterrein Kapelbeemd
 Steenoven 36
 5626 DK Eindhoven
 Tel. +31 4026290 80
 Fax +31 4026290 85
 benelux.nl@geze.com

Bulgaria
 GEZE Bulgaria - Trade
 Representative Office
 Nickolay Haitov 34 str., fl. 1
 1172 Sofia
 Tel. +359 247043 73
 Fax +359 247062 62
 office-bulgaria@geze.com

China
 GEZE Industries (Tianjin) Co., Ltd.
 Shuangchenzhong Road
 Beichen Economic Development
 Area (BEDA)
 Tianjin 300400, P.R. China
 Tel. +86 2226973995 0
 Fax +86 22269727 02
 chinasales@geze.com.cn

GEZE Industries (Tianjin) Co., Ltd.
 Branch Office Shanghai
 11D, Building 2, Youyou Century
 Plaza
 No. 428, South Yanggao Road
 200127 Pudong, Shanghai, P.R. China
 Tel. +86 21 52340960
 Fax +86 21 64472007
 chinasales@geze.com.cn

GEZE Industries (Tianjin) Co., Ltd.
 Branch Office Guangzhou
 Room 17C3
 Everbright Bank Building, No.689
 Tian He Bei Road
 510630 Guangzhou, P.R. China
 Tel. +86 20387318 42
 Fax +86 20387318 34
 chinasales@geze.com.cn

GEZE Industries (Tianjin) Co., Ltd
 Branch Office Beijing
 Room 1001, Tower D
 Sanlitun SOHO
 No. 8, Gongti North Road,
 Chaoyang District
 100027 Beijing, P.R.China
 Tel. +86 10593593 00
 Fax +86 10593593 22
 chinasales@geze.com.cn

France
 GEZE France S.A.R.L.
 ZAC de l'Orme Rond
 RN 19
 77170 Servon
 Tel. +33 1 606260 70
 Fax +33 1 606260 71
 france.fr@geze.com

Hungary
 GEZE Hungary Kft.
 Hungary-2051 Biatorbágy
 Vendel Park
 Huber u. 1.
 Tel. +36 23532 735
 Fax +36 23532 738
 office-hungary@geze.com

Iberia
 GEZE Iberia S.R.L.
 C/ Andorra 24
 08830 Sant Boi de Llobregat
 (Barcelona)
 Tel. +34 902194 036
 Fax +34 902194 035
 info@geze.es

India
 GEZE India Private Ltd.
 MF 2 & 3, Guindy Industrial Estate
 Ekkattuthangal
 Chennai 600 097
 Tamilnadu
 Tel. +91 44 306169 00
 Fax +91 44 306169 01
 office-india@geze.com

Italy
 GEZE Italia S.r.l
 Sede di Milano
 Via Giotto 4
 20040 Cambiago (MI)
 Tel. +39 0295069 511
 Fax +39 0295069 533
 italia.it@geze.com

Sede di Roma
 Via Lucrezia Romana, 91
 00178 Roma
 Tel. +39 06 726531 1
 Fax +39 06 726531 36
 roma@geze.biz

Poland
 GEZE Polska Sp.z o.o.
 ul. Annopol 21
 03-236 Warszawa
 Tel. +48 224 404 440
 Fax +48 224 404 400
 geze.pl@geze.com

Romania
 GEZE Romania S.R.L.
 IRIDE Business Park,
 Str. Dimitrie Pompeiu nr. 9-9a,
 Building 10, Level 2, Sector 2,
 020335 Bucharest
 Tel.: +40 212507 750
 Fax: +40 212507 750
 office-romania@geze.com

Russia
 OOO GEZE RUS
 Gamsonovskiy Per. 2
 115191 Moskau
 Tel. +7 495 93306 59
 Fax +7 495 93306 74
 office-russia@geze.com

Scandinavia – Sweden
 GEZE Scandinavia AB
 Mallslingan 10
 Box 7060
 18711 Täby, Sweden
 Tel. +46 87323 400
 Fax +46 87323 499
 sverige.se@geze.com

Scandinavia – Norway
 GEZE Scandinavia AB avd. Norge
 Industriveien 34 B
 2073 Dal
 Tel. +47 63957 200
 Fax +47 63957 173
 norge.se@geze.com

Scandinavia – Denmark
 GEZE Danmark
 Branch office of GEZE Scandinavia AB
 Mårkærvej 13 J-K
 2630 Taastrup
 Tel. +45 463233 24
 Fax +45 463233 26
 danmark.se@geze.com

Singapore
 GEZE (Asia Pacific) Pte. Ltd.
 21 Bukit Batok Crescent
 #23-75 Wcega Tower
 Singapore 658065
 Tel: +65 6846 1338
 Fax: +65 6846 9353
 gezessea@geze.com.sg

South Africa
 GEZE Distributors (Pty) Ltd.
 118 Richards Drive, Halfway House,
 Ext 111, P.O. Box 7934, Midrand 1685,
 South Africa
 Tel: + 27 113158 286
 Fax: + 27 113158 261
 info@gezesa.co.za

Switzerland
 GEZE Schweiz AG
 Zelglimatte 1A
 6260 Reiden
 Tel. +41 62 28554 00
 Fax +41 62 28554 01
 schweiz.ch@geze.com

Turkey
 GEZE Kapı ve Pencere Sistemleri
 San. ve Tic. Ltd. Sti.
 İstanbul Anadolu Yakası Organize
 Sanayi Bölgesi
 Gazi Bulvarı Caddesi 8.Sokak No:8
 Tuzla-İstanbul
 Tel. + 90 216 45543 15
 Fax + 90 216 45582 15
 office-turkey@geze.com

Ukraine
 LLC GEZE Ukraine
 ul. Viskoznaya, 17,
 Building 93-B, Office 12
 02660 Kiev
 Tel./Fax +38 445012225
 office-ukraine@geze.com

United Arab Emirates/GCC
 GEZE Middle East
 P.O. Box 17903
 Jebel Ali Free Zone
 Dubai
 Tel. +971 48833 112
 Fax +971 48833 240
 gezeme@geze.com

United Kingdom
 GEZE UK Ltd.
 Blenheim Way
 Fradley Park
 Lichfield
 Staffordshire WS13 8SY
 Tel. +44 15434430 00
 Fax +44 15434430 01
 info.uk@geze.com

GEZE REPRESENTATIVE