



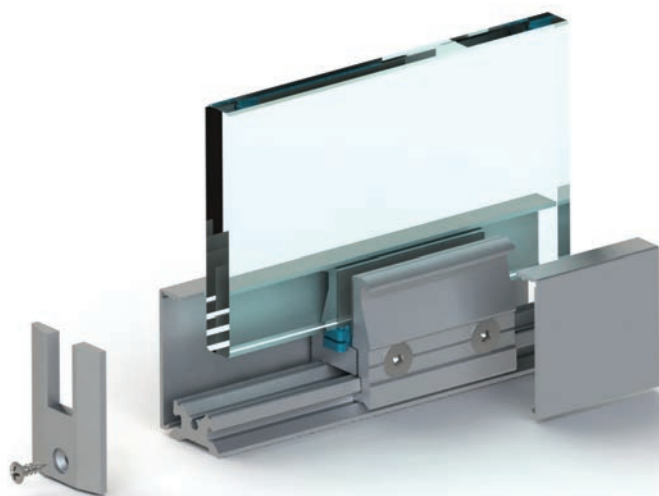
Glass wall system

GSW Pro



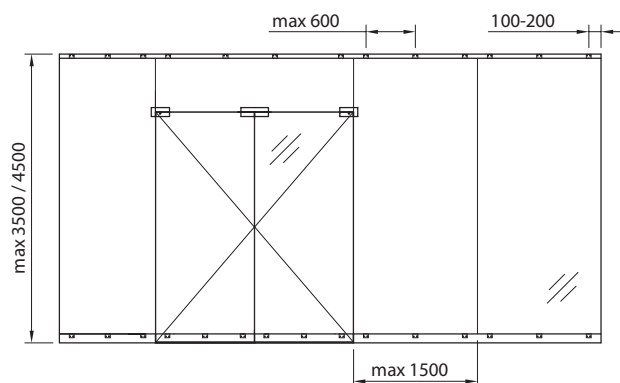
System features

- two types of mounting profiles - 50 mm or 110 mm tall,
- guaranteed stability and strength of the structure - the glass is fastened using special fixing clamps,
- easy and convenient wall mounting - it is possible to change clamp position all along the symmetrical base profile, whose centerline is the same as glass pane centerline,
- system with CE marking based on European Technical Assessment issued by the Building Research Institute after safety tests,
- various finishing options - stainless steel or aluminum profiles available in a wide range of anodic or powder coating colors.

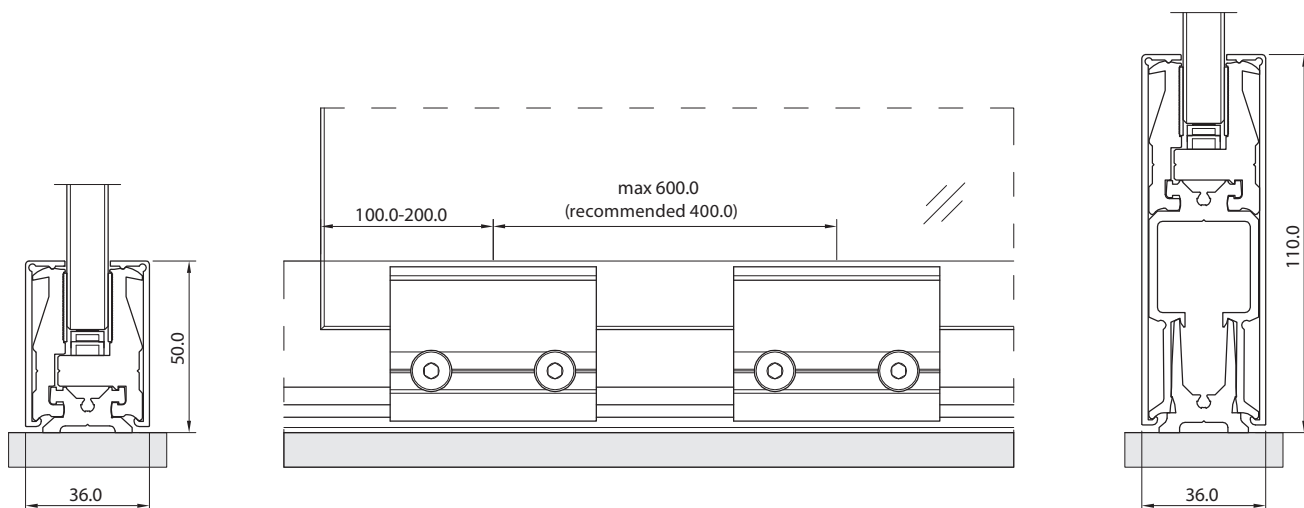


Specification

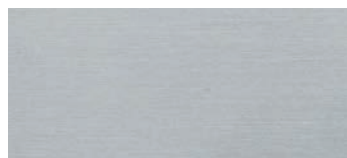
Category of use	IV
Category of space	A, B, C, D, E
Type of glass	ESG 10, 12
Max. height (mm)	3500 (ESG 10) / 4500 (ESG 12)
Material/finish	Anodized aluminium / RAL aluminium / Brushed stainless steel
Approval document	ETA-15/0867



Technical drawings



Material and finish



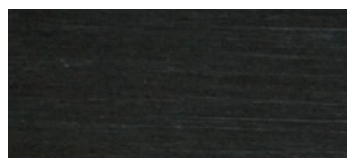
Alu E2/C-0 silver anod.



Alu E2/C-31 acier anod.



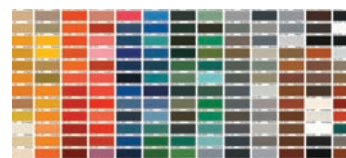
Alu E2/inox anod. polished



Alu E2/C-35 black anod.



Steel V2A brushed



Alu RAL

E2 - brushed surface / pre-treatment according to DIN 17611

C-0, C-31, C-35 - anodized surface color according to EURAS color swatch