

Product data sheet

TS 3000 V *



Overhead door closer with guide rail for single leaf doors with a leaf width up to 1100 mm

AREAS OF APPLICATION

- Fire and smoke protection doors
- Right and left single-action doors
- Single-action doors up to 1100 mm leaf width
- Door leaf and transom installation on the hinge and opposite hinge side

PRODUCT FEATURES

- Closing force EN1-4 with variable adjustment
- Can be used for right and left hand doors without conversion
- Hydraulic latching action which accelerates the door shortly before it is closed
- Closing speed can be individually adjusted
- All functions can be set from the front (except for closing force)

TECHNICAL DATA

Productname	TS 3000 V *
Closing force in accordance with EN 1154	EN 1 - 4
Barrier-free in accordance with DIN 18040 up to leaf width (max.) in mm	1100 mm
Leaf width (max.)	1100 mm
Type of installation	Door leaf installation hinge side, Transom installation opposite hinge side, Transom installation hinge side, Door leaf installation opposite hinge side
Opening angle (max.)	180 °
Suitability for fire protection doors	Yes
Closing force adjustable	Yes, stepless
Adjustable closing speed	Yes
Latching action adjustable	Yes, via valve
Back check integrated	No
Position of closing force adjustment	At the side
Hold-open function	Optional
Smoke switch integrated	No

PART**GUIDE RAIL TS 5000 / 3000 VERTICALLY ADJUSTABLE ***

With height compensation +/- 2 mm and lever



TS 3000 V *



Designation

Guide rail TS 3/5000 vertically adjustable

Guide rail TS 3/5000 vertically adjustable

GUIDE RAIL BG TS 5000 / 3000 VERTICALLY ADJUSTABLE *

With height compensation +/- 2 mm, with lever, opposite hinge side



Designation

Guide rail BG TS 3/5000 vertically adjustable

Guide rail BG TS 3/5000 vertically adjustable

GUIDE RAIL TS 5000 / 3000

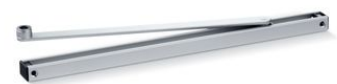
Standard guide rail with lever



Designation	Description	Ident-No.	Colour	Dimensions	Spindle extension
Guide rail TS 3/TS 5000	Standard, with lever	015695	white RAL 9016	448.5 x 30.5 x 20.5 mm	
Guide rail TS 3/TS 5000	Standard, with lever	000773	according to RAL	448.5 x 30.5 x 20.5 mm	
Guide rail TS 3/TS 5000	Standard, with lever	068221	silver-coloured	448.5 x 30.5 x 20.5 mm	
Guide rail TS 3/TS 5000	Standard, with lever	014945	Stainless steel optic	448.5 x 30.5 x 20.5 mm	

GUIDE RAIL BG TS 5000 / 3000

Standard guide rail with lever, opposite hinge side



Designation	Description	Ident-No.	Colour	Dimensions
Guide rail BG TS 3/5000	Standard, with lever, use with door closer on leaf installation on the opposite hinge side	025655	silver-coloured	448.5 x 30.5 x 20.5 mm
Guide rail BG TS 3/5000	Standard, with lever, use with door closer on leaf installation on the opposite hinge side	025656	according to RAL	448.5 x 30.5 x 20.5 mm
Guide rail BG TS 3/5000	Standard, with lever, use with door closer on leaf installation on the opposite hinge side	029404	white RAL 9016	448.5 x 30.5 x 20.5 mm

Designation	Description	Ident-No.	Colour	Dimensions
Guide rail BG TS 3/5000	Standard, with lever, use with door closer on leaf installation on the opposite hinge side	028732	Stainless steel optic	448.5 x 30.5 x 20.5 mm

CLOSER BODY TS 3000 V

Main body for overhead door closer with guide rail EN 1-4



Designation	Description	Ident-No.	Colour	Closing force in accordance with EN 1154	Dimensions
GEZE TS 3000 V Closer	Size EN 1-4 (without guide rail and lever)	028349	dark bronze	EN 1 - 4	226 x 46 x 60 mm
GEZE TS 3000 V Closer	Size EN 1-4 (without guide rail and lever)	028351	according to RAL	EN 1 - 4	226 x 46 x 60 mm
GEZE TS 3000 V Closer	Size EN 1-4 (without guide rail and lever)	028348	silver-coloured	EN 1 - 4	226 x 46 x 60 mm
GEZE TS 3000 V Closer	Size EN 1-4 (without guide rail and lever)	028350	white RAL 9016	EN 1 - 4	226 x 46 x 60 mm

T-STOP GUIDE RAIL BG TS 3000 / 5000

With opening restrictor and lever, opposite hinge side



Designation	Description	Ident-No.	Colour	Dimensions
T-Stop guide rail BG TS 3/5000	with integrated opening restrictor and lever, use with door closer on leaf installation opposite hinge side or with pivot bearing in leaf and transom installation opposite hinge side	102368	according to RAL	452.5 x 33 x 30 mm
T-Stop guide rail BG TS 3/5000	with integrated opening restrictor and lever, use with door closer on leaf installation opposite hinge side or with pivot bearing in leaf and transom installation opposite hinge side	102367	Stainless steel optic	452.5 x 33 x 30 mm
T-Stop guide rail BG TS 3/5000	with integrated opening restrictor and lever, use with door closer on leaf installation opposite hinge side or with pivot bearing in leaf and transom installation opposite hinge side	108482	white RAL 9016	452.5 x 33 x 30 mm
T-Stop guide rail BG TS 3/5000	with integrated opening restrictor and lever, use with door closer on leaf installation opposite hinge side or with pivot bearing in leaf and transom installation opposite hinge side	102366	silver-coloured	452.5 x 33 x 30 mm

TS 3000 V *



T-STOP GUIDE RAIL TS 3000/ 5000

With opening restrictor and lever



Designation	Description	Ident-No.	Colour	Dimensions
T-Stop guide rail TS 3/5000	with integrated opening restrictor and lever	108481	white RAL 9016	452.5 x 33 x 30 mm
T-Stop guide rail TS 3/5000	with integrated opening restrictor and lever	102364	Stainless steel optic	452.5 x 33 x 30 mm
T-Stop guide rail TS 3/5000	with integrated opening restrictor and lever	102365	according to RAL	452.5 x 33 x 30 mm
T-Stop guide rail TS 3/5000	with integrated opening restrictor and lever	102363	silver-coloured	452.5 x 33 x 30 mm

ACCESSORIES

COVER CAP DOOR CLOSER *

For TS 3000/TS 2000, can only be used for door leaf installation



Designation

- Cover cap door closer *
- Cover cap door closer *
- Cover cap door closer *
- Cover cap door closer *
- Cover cap door closer *
- Cover cap door closer *

MECHANICAL HOLD-OPEN UNIT

For standard/T-Stop/Boxer 20.7 mm guide rail



Designation	Description	Ident-No.
Mechanical hold-open unit	for standard / T-Stop / Boxer 20.7 mm guide rail, retention force adjustable, can be switched on and off, can be overridden	071924

FLEXIBLE OPENING RESTRICTOR

for riveted guide rail, standard guide rail BG, standard guide rail and Boxer 20.7 mm guide rail



Designation	Description	Ident-No.
Flexible opening restrictor	for riveted guide rail, standard guide rail BG, standard guide rail and Boxer 20.7 mm guide rail	069780

COVER CAP DOOR CLOSER *

For TS 3000/TS 2000, curved shape

Designation
Cover cap door closer *
Cover cap door closer *

COVER CAP DOOR CLOSER *

For TS 3000/TS 2000, rectangular shape

Designation
Cover cap door closer *
Cover cap door closer *

INSTALLATION MATERIAL

DRILLING TEMPLATE DOOR CLOSER

for TS 5000/TS 4000/TS 3000/TS 2000



Designation

Drilling template door closer

GLASS CLAMPING SHOE

For TS 3000 / 2000 NV



Designation

Glass clamping shoe

Glass clamping shoe

Glass clamping shoe

Glass clamping shoe

MOUNTING PLATE AND COUNTERPLATE ALL-GLASS DOOR

For TS 3000 / 2000 NV



Designation

Mounting plate and counterplate all-glass door

MOUNTING PLATE GUIDE RAIL BG

For standard, ECLine, T-Stop and EFS guide rail, opposite hinge side



Designation

Mounting plate guide rail BG

Mounting plate guide rail BG

MOUNTING PLATE GUIDE RAIL

For standard, ECLine, T-Stop and EFS guide rail



Designation	Description	Ident-No.	Colour
Mounting plate guide rail	for standard / ECLine / T-Stop / EFS guide rail	001512	silver-coloured
Mounting plate guide rail	for standard / ECLine / T-Stop / EFS guide rail	104515	according to RAL
Mounting plate guide rail	for standard / ECLine / T-Stop / EFS guide rail	129252	white RAL 9016

MOUNTING PLATE DOOR CLOSER

for TS 3000 with hole pattern according to DIN EN 1154 Supplement 1



Designation	Description	Ident-No.	Colour	Dimensions
Mounting plate door closer	for TS 3000 with hole pattern according to DIN EN 1154 Supplement 1	011232	dark bronze	226 x 60 x 5 mm
Mounting plate door closer	for TS 3000 with hole pattern according to DIN EN 1154 Supplement 1	011233	white RAL 9016	226 x 60 x 5 mm
Mounting plate door closer *	for TS 3000 with hole pattern according to DIN EN 1154 Supplement 1	135237	black RAL 9005	226 x 60 x 5 mm
Mounting plate door closer	for TS 3000 with hole pattern according to DIN EN 1154 Supplement 1	011230	silver-coloured	226 x 60 x 5 mm
Mounting plate door closer	for TS 3000 with hole pattern according to DIN EN 1154 Supplement 1	011234	according to RAL	226 x 60 x 5 mm

LINTEL CASING BRACKET

for standard guide rail

**Designation**

Lintel casing bracket

Lintel casing bracket

Lintel casing bracket

Lintel casing bracket

Lintel casing bracket

LINTEL CASING BRACKET

For ECLine and T-Stop guide rail



Designation

Lintel casing bracket

Lintel casing bracket

* The products designated above may vary in form, type, characteristics, function, or availability depending on the country. Please get in touch with your GEZE contact person if you have any questions.